



MONTHLY MEMBERSHIP PROGRESS REPORT

District 324A1

Results as of: 05/31/2018

GMT: N S SANKAR

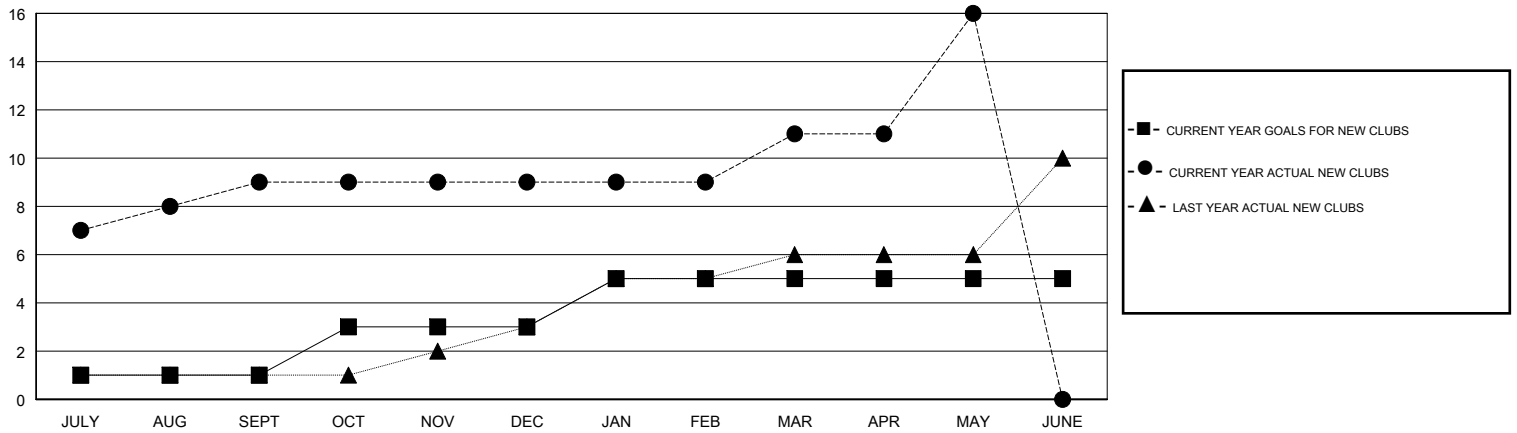
LOCATION INDIA

GMT CA

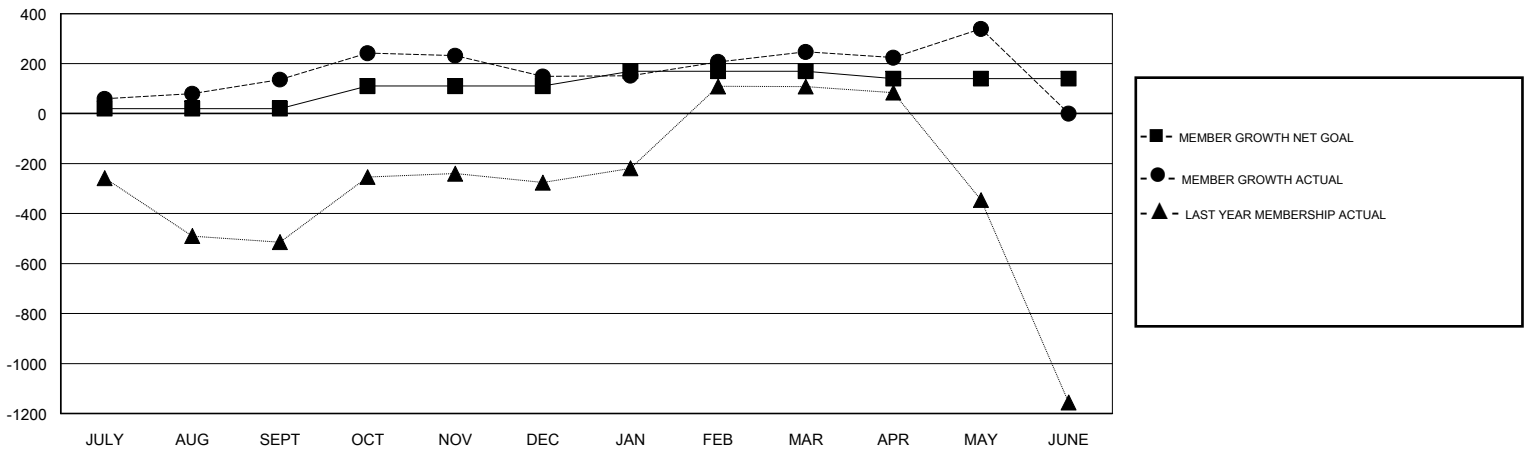
Clubs			
RESULTS FOR 2017-2018			
QUARTER	NEW CLUB GOAL	NEW CLUBS	DROPPED CLUBS
JULY/AUG/SEPT	1	9	1
OCT/NOV/DEC	2	0	2
JAN/FEB/MAR	2	2	1
APR/MAY/JUNE	0	5	1

Members			
RESULTS FOR 2017-2018			
QUARTER	MEMBER GROWTH NET GOAL	MEMBER GROWTH ACTUAL	DROPPED MEMBERS ACTUAL (including transfers)
JULY/AUG/SEPT	20	374	217
OCT/NOV/DEC	90	187	172
JAN/FEB/MAR	60	226	113
APR/MAY/JUNE	-30	321	227

GOALS AND ACTUAL NEW CLUBS CUMULATIVE



GOALS AND ACTUAL MEMBERS CUMULATIVE



DROPPED CLUBS: 5	142 CLUBS OF 175 ADDED 1 OR MORE NEW MEMBERS	<u>GENDER DISTRIBUTION</u> MALE 4,280 (76.44%) FEMALE 1,319 (23.56%) Women Percentage Fiscal Year Goal: 30%
<u>DROPPED MEMBERS</u> DECEASED 16 CLUB CANCELLED 101 OTHER 612 TOTAL 729	CLICK HERE FOR CUMULATIVE MEMBERSHIP DATA	TOTAL FAMILY UNIT MEMBERS 1,489 FAMILY MEMBERS PAYING HALF DUES 791